

Briefing for Parents

*Full Subject-Based Banding (Full SBB) for
Secondary One students.*



Overview



- 1. Background Information on Full SBB**
- 2. How does Full SBB look like in Hua Yi Secondary School?**





Why Full SBB?

- Full SBB is part of MOE's ongoing efforts to nurture the joy of learning and develop multiple pathways to **cater to the different strengths and interests of our students.**
- We want to:

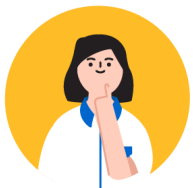
Customise learning to your child's strengths and interests

Help your child build confidence and an intrinsic motivation to learn for life

Reduce stigmatisation associated with streaming and strengthen social mixing

Facilitate access to post-secondary pathways that cater to students with different strengths





How will Full SBB be implemented?



Year 2020

Full SBB pilot commenced in 28 secondary schools and will be rolled out in phases till 2024.

The initial feedback from pilot schools has been positive.



Year 2022

Our school has implemented Full SBB from 2022.

- Mixed form classes with students of different academic abilities.
- Eligible Sec 2 students may take Humanities subjects at a more demanding level.

Next phase of schools

Year 2023

Final phase of schools

Year 2024

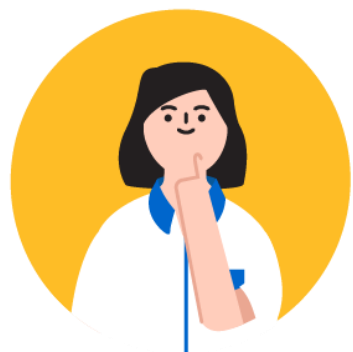
From 2024,

- The Exp, N(A) and N(T) courses will be phased out. Students will be able to study subjects at different levels.

From 2027,

- Students will sit for the common national examination and receive a new national certification with subjects at different levels.





How does Full SBB look like in Hua Yi?



How does FSBB look like in Hua Yi?



- Implementing mixed form class with the provision of a common curriculum
 - Offering of English, Math, Science and Mother Tongue at more demanding level or less demanding level.
- Offering Humanities subjects at more demanding level or less demanding level to students when they are in Sec 2.



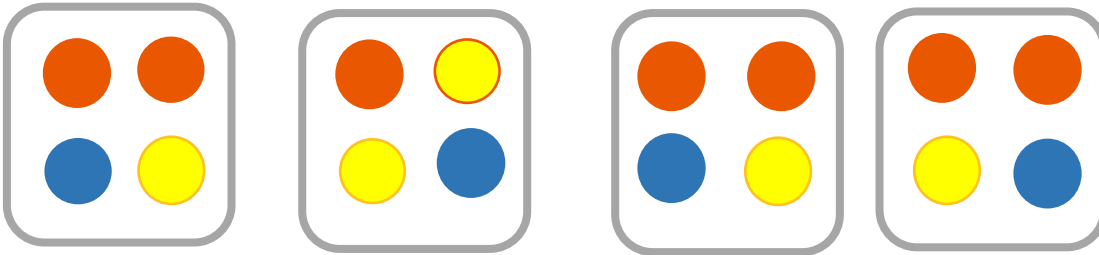
How is Full SBB implemented in Hua Yi?

Mixed Sec 1 form classes



Illustrative Example:

With Full SBB: Form Class Permutations

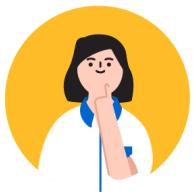


- In order to create more opportunities for students of different backgrounds and academic courses to learn and play together,
- We organise mixed form classes to ensure a **good mix of student profiles**.
- Every class will be assigned a House.
- This enables students from different backgrounds to build meaningful friendships and learn to value different perspectives.



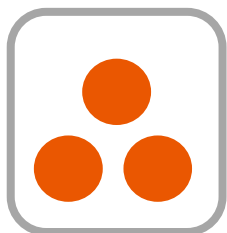
How is Full SBB implemented in Hua Yi?

Mixed Sec 1 form classes

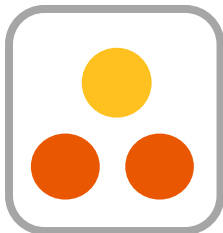


Illustrative Example on banded classes:

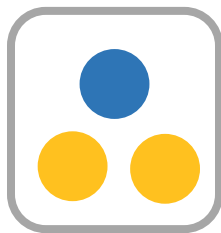
With Full SBB:
**Subject classes (EL,MA,MTL,SCI,
Humanities)**



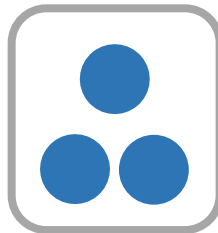
Subject at G3
Level



Subject at G3
Level



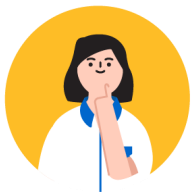
Subject at G2
Level



Subject at
G1 Level

- Students in the same form class will learn a common curriculum for six subjects comprising ~1/3 of curriculum time:
 - Art
 - Character & Citizenship Education (CCE)
 - Design & Technology (D&T)
 - Food & Consumer Education (FCE)
 - Music
 - Physical Education (PE)
- For other subjects (English Language, Humanities, Mathematics, Mother Tongue Languages and Science), students will attend classes with others taking the subject at the same subject level (G3/G2/G1).





How is Full SBB implemented in Hua Yi?

Common Curriculum Subjects

Common Curriculum Subjects

Examinable Subjects:

- Art
- Design & Technology (D&T)
- Food and Consumer Education (FCE)

Non-examinable Subjects:

- Character & Citizenship Education (CCE)
- Music
- Physical Education (PE)

The six common curriculum subjects would each have a single syllabus for all students at Lower Secondary levels.

- Content and learning outcomes of these subjects are taught at a common level that is accessible by all students.
- Teachers adopt a range of approaches to teach the subjects catering to the different learning needs of their students.
- Students will learn the basics of the subjects from Secondary One and deepen their learning over the two years. They will also have opportunities to learn from different tasks and assignments tailored to their learning progress.



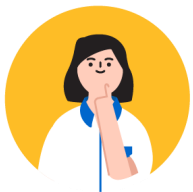


How is Full SBB implemented?

Subject-Based Banding (SBB) Provisions

(A) Students who offer most subjects at G1 or G2 are eligible to offer English Language (EL), Mother Tongue Languages (MTL), Mathematics (MA) and Science (SCI) at a more demanding level from the start of S1 if they have performed well in these subjects at the Primary School Leaving Examination (PSLE).





How is Full SBB implemented?

Subject-Based Banding (SBB) Provisions

Eligibility of students to offer subject(s) like EL, MTL, MA, SCI at a more demanding level at the start of Sec 1

Indicative Level of Most Subjects at Start of S1	PSLE Standard Grade	PSLE Foundation Grade	Option to offer subject at
G1	AL 5 or better	-	G3 / G2
	AL 6	AL A	G2
G2	AL 5 or better	-	G3





How is Full SBB implemented?

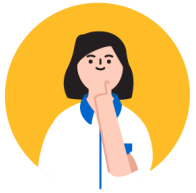
Subject-Based Banding (SBB) Provisions

Eligibility of students to offer HMTL instead of MTL at the start of Sec 1, should they meet the following criteria

Eligibility Criteria for Secondary School HMTL

- (i) An overall PSLE Score of 8 or better
- OR
- (ii) An overall PSLE Score of 9 to 14 (inclusive); and attain
 - AL 1/AL 2 in MTL or
 - Distinction/Merit in HMTL



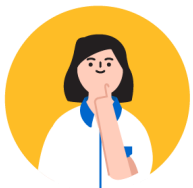


How is Full SBB implemented?

Subject-Based Banding (SBB) Provisions

(B) For EL, MA and/or SCI, students who offered the subject(s) at Foundation level at PSLE and are eligible to offer the subject(s) at G3 based on their overall PSLE Score will have the option to offer the subject(s) at the less demanding G2 level.





How is Full SBB implemented?

Subject-Based Banding (SBB) Provisions

(C) For MTL, students with difficulties coping with the subject have the option to offer MTL at a less demanding level based on their MTL performance at the PSLE as shown in below:

Indicative Level of Most Subjects at Start of S1	PSLE Standard MTL Grade	PSLE Foundation MTL Grade	Option to offer MTL at
G3	AL 6	AL A	G2
	AL 7-8	AL B-C	G1 or G2
G2	AL 7-8	AL B-C	G1



Opting into SBB

- If your child meet the **eligibility criteria for the subjects (ie. EL, MTL, MATH, SCI) at the more demanding level**, he/she will be offered the subject(s) at the more demanding level. **You and your child will be informed of the SBB offer via the Parent Gateway.**
- Please indicate the **acceptance of the offered subject(s)** that your child wishes to take (or not to take) at the more demanding level via the Parent Gateway **by 27 December 2023.**



Opting into SBB

- If your child meets the eligibility to take the subject(s) **at a less demanding level and would like to exercise the option to take the subject(s) at less demanding level**, please inform us via email to Mdm Suzanne Lye at lye_yoke_pheng@schools.gov.sg by the same deadline of **27 December 2023.**



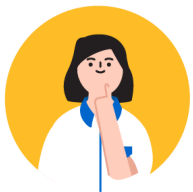


How is Full SBB implemented in Hua Yi?

If your child is not eligible for SBB now, there are still other opportunities to take the subjects (EL, MTL, MA, SCI) at a more demanding level...

- At Mid-year or End-of-Year Semestral Reviews, based on the following eligible criteria:
 - Overall result of 75% or higher in the subject;
 - Positive learning attitude to cope with the higher academic demand
 - Teachers' Recommendation
- For these new students who take up the SBB subjects at mid year or end of year, there will be follow-up bridging sessions for them.





How is Full SBB be implemented in Hua Yi?

Offering Humanities subjects at a more demanding level at Secondary Two (2025)

Current Subject Level	School-based Results	Option to offer subject starting from S2 Sem 1
G1	<p>Students who offered G1 Humanities in S1 can offer G2 Humanities in Geography, History and/or Literature in English in S2 if they obtained</p> <ul style="list-style-type: none">• $\geq 75\%$ overall in G1 English Language (or $\geq 50\%$ overall in G2 English Language); AND• A Pass with Distinction grade for both G1 Humanities (Social Studies component) Performance Tasks in Semesters 1 and 2.• Positive learning attitude to cope with the higher academic demand• Teachers' Recommendation	G2
G2	<p>Students offering G2 Humanities in S1 can offer G3 Geography, History and/or Literature in English in S2 if they obtained</p> <ul style="list-style-type: none">• $\geq 75\%$ overall in G2 History, Geography or Literature in English.• Positive learning attitude to cope with the higher academic demand• Teachers' Recommendation	G3



For more information

**You may also visit MOE's PSLE-Full SBB
microsite via the QR code below.**

